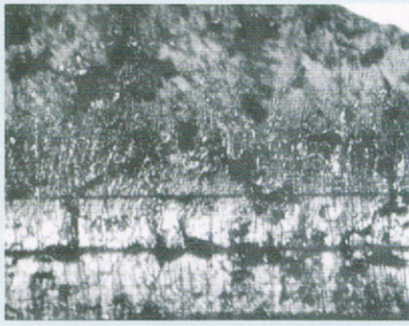
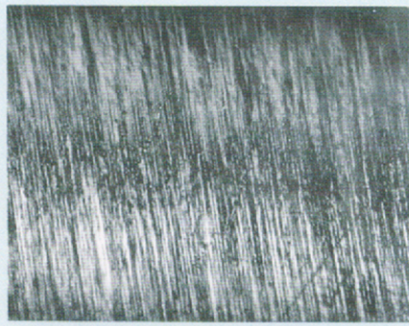


円筒研削鏡面仕上げ比較テスト

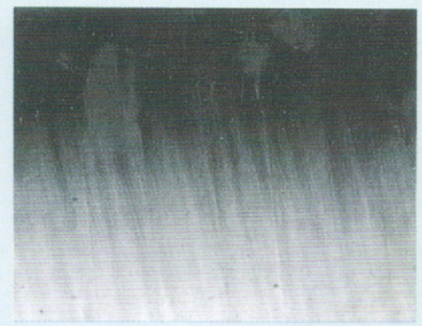
●接写写真データ (Union 金属顕微鏡) Contact photo data (Union metal microscope)



×200
φ50mms45C引抜素材
φ50mms 45C drawn-out material
Rmax. = 3.5



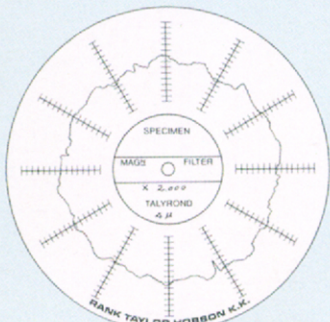
×200
S45C素材 #2000S 研磨仕上
S45C material #2000S grinding finish
Rmax. = 0.37



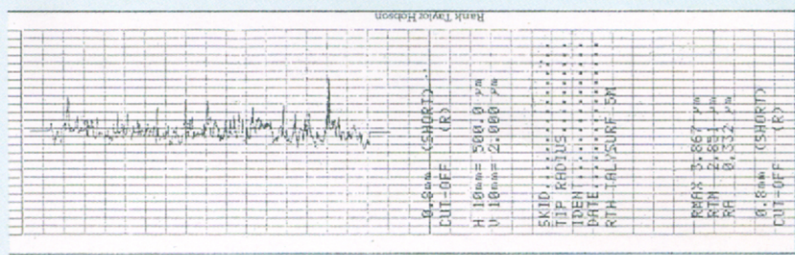
×200
硬質クローム鍍金加工 #3000E 研磨仕上
Hard chrome plated #3000E grinding finish
Rmax. = 0.1

●仕上比較データ (RANK. TAYLOR HOBSON 真円度測定器) Finish comparison data (Rank Taylor Hobson's roundness tester)

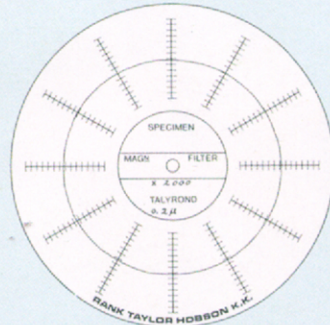
研磨前
Before grinding
×2,000



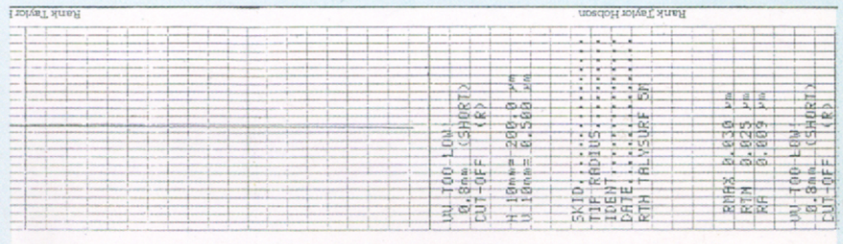
×5,000



研磨後
After grinding
×5,000



×20,000



●各種研磨仕上ロール Various kinds of ground rolls

アルミニウムロール
Aluminum roll

セラミック溶射ロール
Ceramics injected roll

超硬ロール
Superhard roll



●各種砥石粒度別研磨データ (下地硬質クローム鍍金加工) Data of grinding results classified by grain sizes of different grinding wheels (Hard chrome plated)

